



**KEEPING YOU ON
THE RITE LINE**



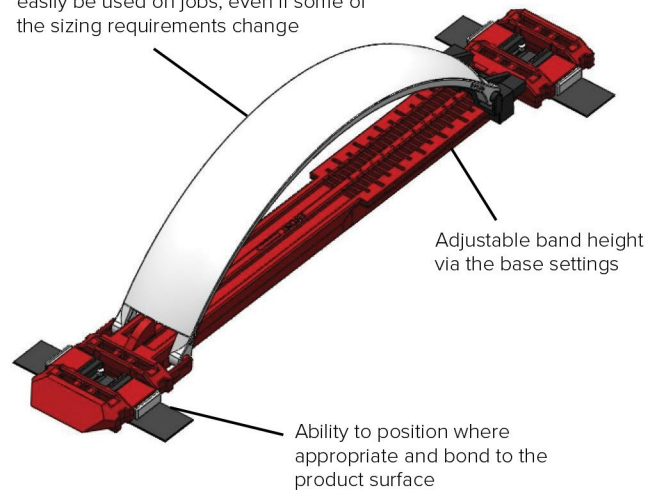
WHAT IS RITELINE?

Riteline are 100% Australian designed, owned and manufactured casing spacers, purpose built for the trenchless industry. They assist the carrier pipe (water main or sewerage) during the installation process by maintaining the pipe's position relative to the bored hole or encasement pipe. They protect the carrier pipe and facilitate the ease of installation by lowering the friction coefficient between the moving surfaces.

The innovative design and flexibility of Riteline casing spacers means their height can be adjusted from 30mm up to 125mm, allowing for multiple configurations, all from the one unit. This reduces the need to have multiple products on hand as they can be installed to suit the project's need, even if requirements change at the last moment.

Unlike other spacers on the market, Riteline casing spacers are spring loaded, allowing them to flex when they hit rock during the installation process so they will not break. This also removes the issue of them floating when grouting takes place.

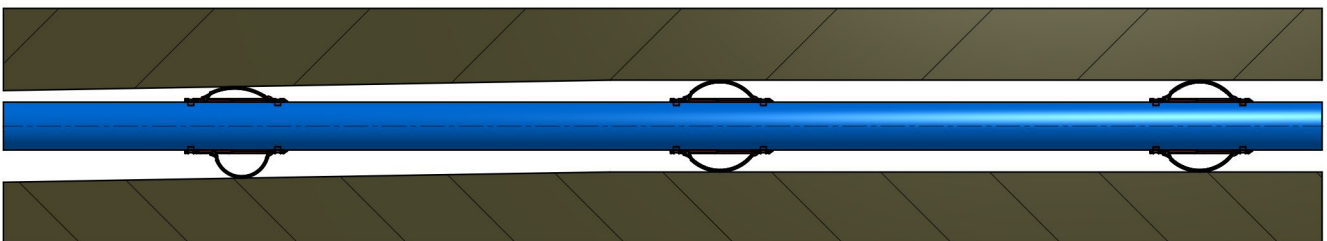
Only two band sizes needed to achieve a range of heights, allowing for stock to easily be used on jobs, even if some of the sizing requirements change



FEATURES

- Adjustable height form 30mm up to 125mm
- Manufactured entirely from inert engineered thermoplastics which make it safe for contact with potable water and incorporates low friction, high abrasion/wear resistant properties
- Will not promote corrosion when used with metallic carrier pipes, nor will it degrade the mechanical performance of the surrounding grout in grouted installations
- Riteline's adjustability means any discrepancies in the fall of the outer casing can be accounted for, keeping the central services on grade
- As Riteline spacers are fully adjustable, they are a do-it-all kit, so you no longer require stock of different fixed height centralizers
- Riteline spacers are effectively spring loaded, allowing you to adjust the tension as required
- Ritline spacers have undergone FEA and physical testing to determine the deformation of the device, at each setting, under a range of loads and with each of the slide pad sizes
- Riteline's adhesive base simply sticks on to whatever you need it to. You do not need to run its as an array around a casing
- You can run as many Riteline spacers where they are needed, and as few where they are not
- Can be used with pipes manufactured from Acetal, PP and Nylon, and are suitable for use on pipes larger than 92.5mm OD

Simply adjust the Riteline spacers to correct a bore that has dropped at one end.



STOCKISTS

Aaron Mackley
Empire Infrastructure Pty Ltd
Phone: 0401 157 336
Email: aaron.mackley@empire.team

RIGID/FLEX SERIES



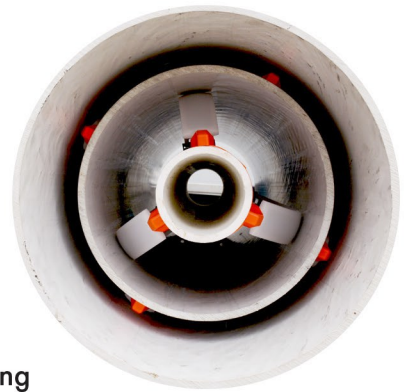
APPLICATION

Instantly customisable casing spacers with very high pipe adhesion, used for slip lining and pipe centralizing in medium to heavyweight pipe-in-cavity installations. Compatible with all pipe materials including steel, DICL, MSCL, GRP, PVC and HDPE. Suitable for all diameters from 100mm and greater.

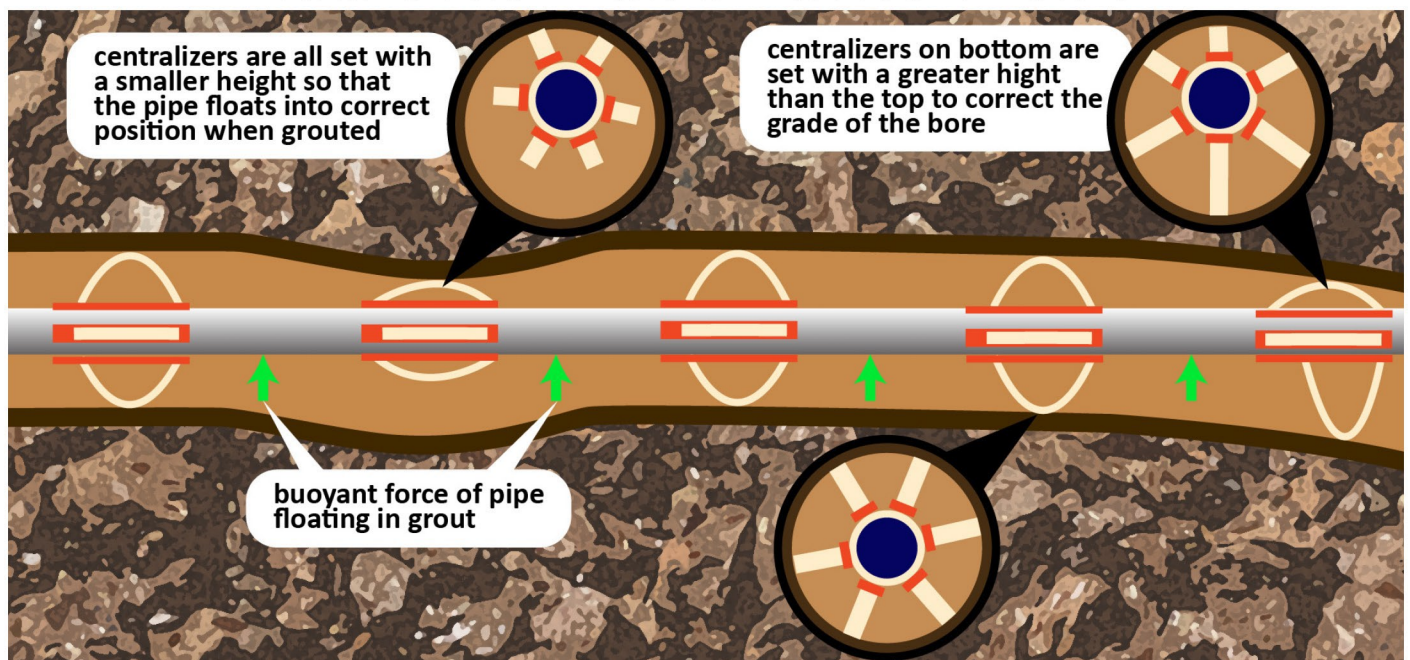


FEATURES AND PROPERTIES

- Made entirely from inert and durable engineering polymers with low co-efficient of friction which makes pipe installation easier and more efficient by providing a slip lining between the pipe and the bored hole
- Primarily designed for horizontal pipe installations, but easily used in vertical.
- Flexible spring-like design allows for elastic deformation around obstacles, easing the installation process and preventing jamming.
- Adjustable ratchet design allowing for spacers to be instantly customised to fit the requirements of installations and eliminating the need for stocking many different units.
- Integrated very high bond adhesive strips simplifying installation on the pipe and preventing any slippage as well as eliminating the need to pre-wrap or treat the pipe.
- Requires no tools for installation, a jig can be provided to make the ratcheting easier and more efficient.
- Low profile design which allows for grout to flow around them easily which prevents grouting failure.
- Fits Pipes from 100mm diameter with no upper limit. The number of spacers required is solely based on load.

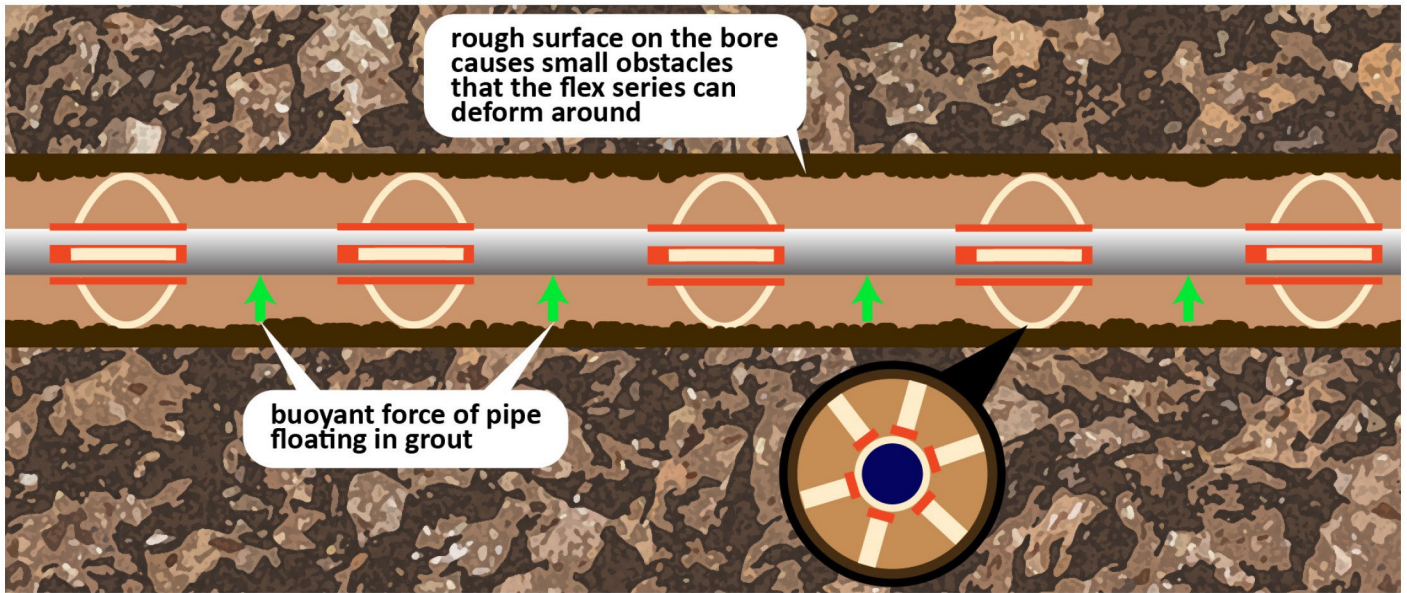


FIXING PROBLEMS IN DIFFICULT BORES



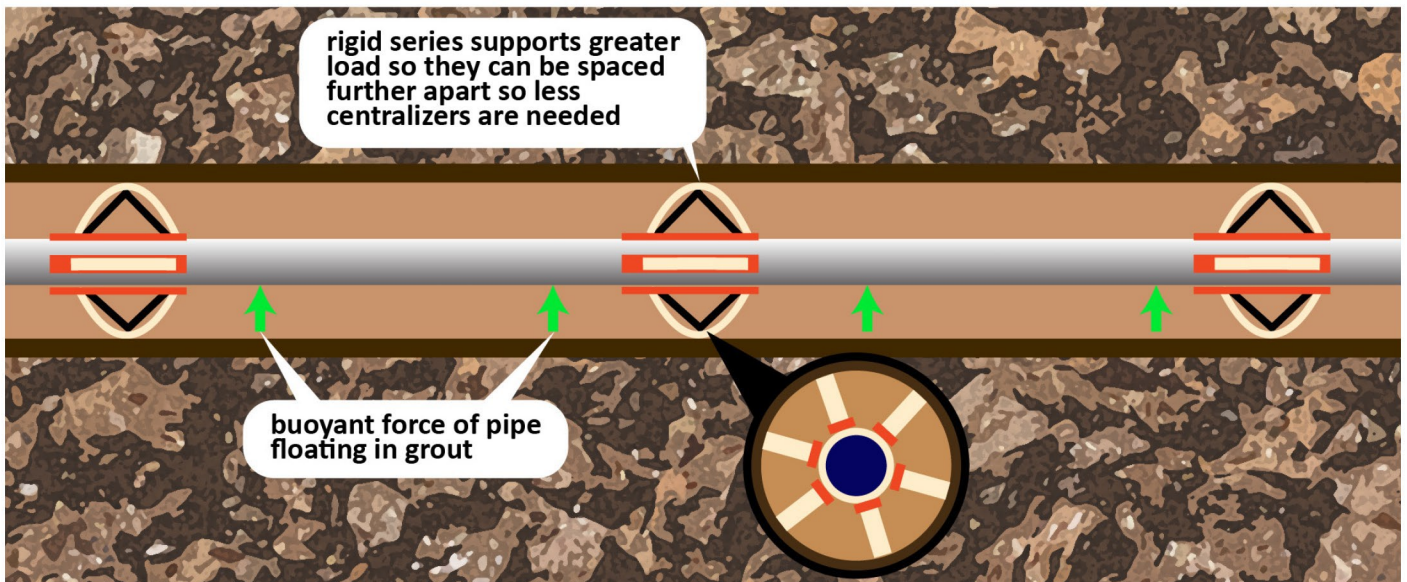
THE FLEX SERIES

The flex series can flex and deform around obstacles during installation, it is ideal for use in bores that have rough surfaces and in bores with slight misalignments, the flex series will prevent jamming in these problematic cases. The flex series can't support as much load so more of them are needed for installations with high loads.



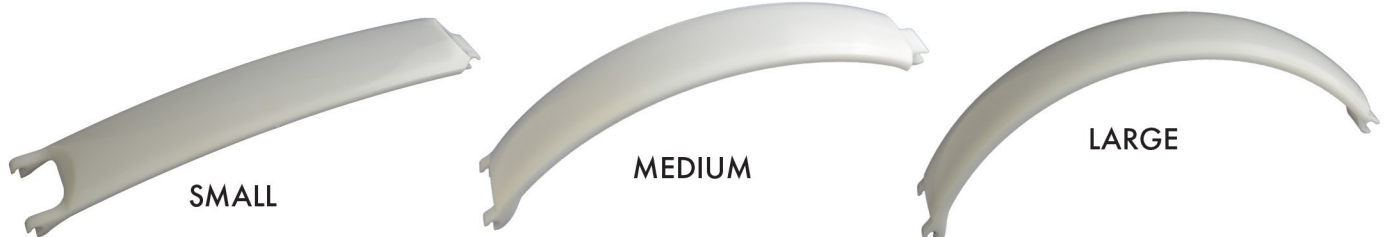
THE RIGID SERIES

The rigid series has got supports that give it much higher load bearing capability than the flex, this means that the spacers can be positioned further apart which decreases the total amount of spacers needed per installation. the Rigid series can only deflect a small amount when loaded so In rough uneven bores the flex will be better suited.

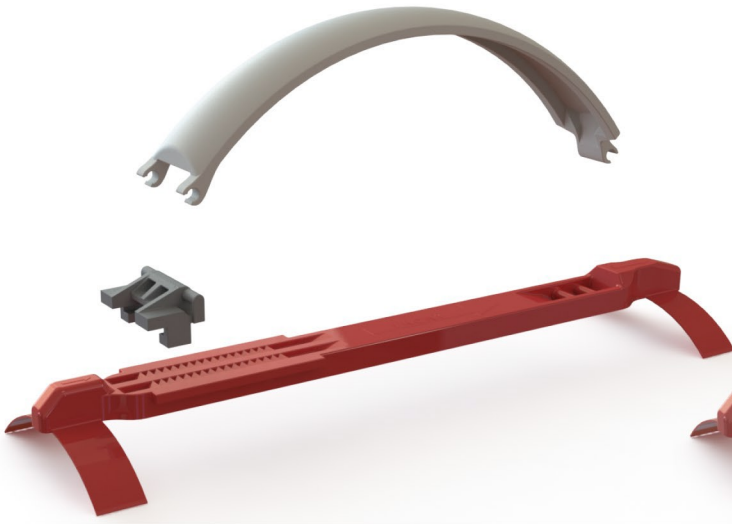


BAND SIZES

Both the rigid and flex series come in 3 sizes; small, medium and large. The different sizes have the same load rating and are solely to accommodate the full range of height up to 125mm, each size uses the same base plate and ratchet slider.



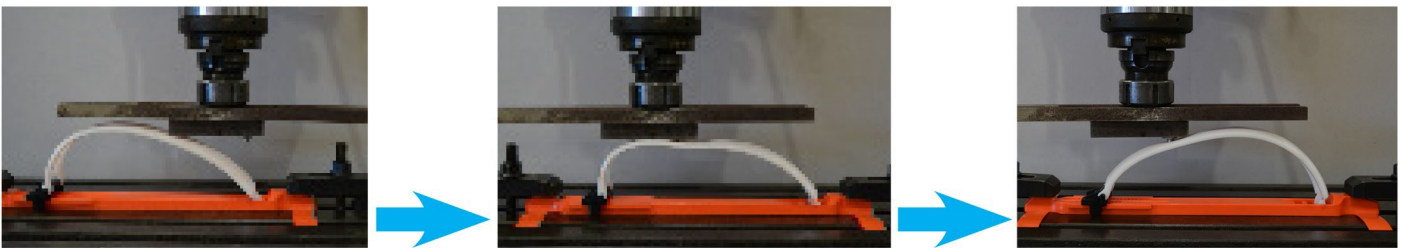
FLEX SERIES



RIGID SERIES



FLEX DEFORMATION AROUND OBSTACLES



UNIQUE INDIVIDUAL ATTACHMENT SYSTEM

Riteline spacers incorporate very high adhesion grip pads that give each centralizer a very strong anchor to the pipe. This means that the number of centralizers required is solely determined by the weight of the unfilled pipe in grouted installations and the max weight of the installation (i.e. Pipe full of water) for un-grouted installations. The diameter of the pipe has no effect on the number of centralizers needed as each one is attached individually, and therefore, are not reliant on a series of connected segments to fully support the pipe like other centralizer designs which require more centralizers increasing the cost of the installation.



A jig is used to easily and efficiently set the ratchet mechanism to get the desired height (right)





RITELINE CASING SPACERS:

FLEX SERIES

RIGID SERIES

ALL AUSTRALIAN: CONCEPT, DESIGN, OWNERSHIP AND MANUFACTURING. THIS IS TRULY AUSTRALIAN MADE!

RITELINE CENTRALISERS: Enhancing Precision in Trenchless Installations

Introducing Riteline Centralisers, an innovative solution designed to revolutionise the accuracy of trenchless installations. These centralisers are meticulously crafted to provide unparalleled support to the carrier pipe, ensuring its fixed position relative to the bored hole or encasement pipe.



Unmatched Customisation and Durability

Experience the ultimate in customisable centralisers and casing spacers, manufactured from durable engineering polymers. Contractors rave about their adaptability, with Riteline proving its strength and durability time and time again.

Flexibility and Height Customisation

Riteline Centralisers offer the flexibility you need, with both flex and rigid options available. What sets them apart from other centralisers on the market is their adjustability feature. With the ability to be modified to different heights, ranging from 30mm up to 125mm, there's no need to stock multiple products. Contractors can effortlessly configure the centralisers to meet their precise requirements.



With three different sized bands, and with both flex and rigid options, adjustable Riteline Centralisers have 34 possible settings, and the ability to be modified to heights ranging from 30mm to 125mm.

Unparalleled Control and Streamlined Installations

Riteline Centralisers are spring-loaded, allowing for effortless tension adjustment, and providing greater flexibility and control during the installation process. Even obstacles like rocks aren't a problem. The centralisers are designed to flex and allow for elastic deformation when they hit obstacles. This unique characteristic eases the installation process by preventing floating during

grouting, preventing jamming and ensuring a seamless installation.

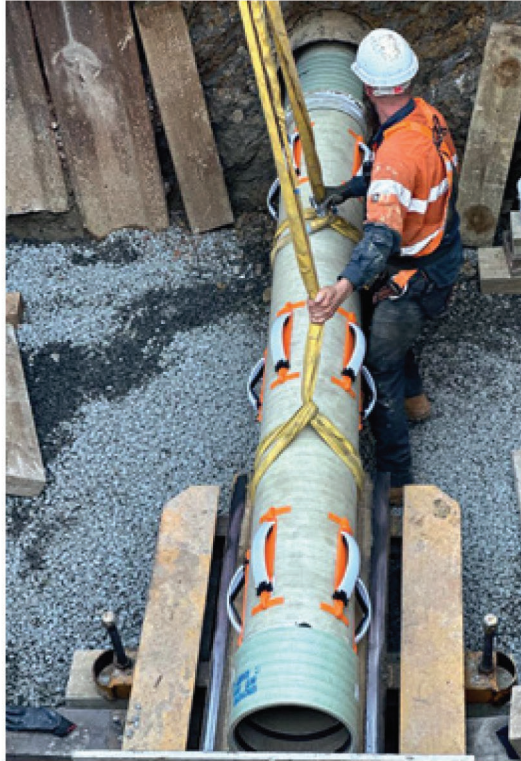
Efficiency at its Core

Manufactured from inert and durable engineering polymers with a low coefficient of friction, Riteline casing spacers make pipe installation easier and more efficient. They provide a slip lining between the pipe and the bored hole, simplifying the installation process and ensuring optimal performance.





- Use only what's needed for pipe load
- No additional tools required
- Reduce excess stock held
- Versatile, adjustable and reliable



Simplified Customisation and Secure Installation

Thanks to their adjustable ratchet design, Riteline casing spacers can be instantly customised to fit the requirements of any installation. Say goodbye to stocking multiple units in different sizes. Riteline's integrated, very high-bond adhesive strips simplify installation, prevent slippage and eliminate the need for pre-wrapping or treating the pipe. Plus, there's no need for additional tools; Riteline can provide a jig to make the ratcheting process even more efficient.



Grout-Friendly and Versatile

With a low-profile design, Riteline casing spacers allow grout to flow easily around them, preventing grouting failure and ensuring a secure installation. Riteline Centralisers fit pipes from 100mm in diameter with no upper limit. The number of spacers required is solely based on the load, ensuring a tailored and efficient solution.

Discover the power of precision with Riteline Centralisers.

Contact the team today to learn more and revolutionise your trenchless installations.

1300 116 664 - Aaron Mackley

With Riteline Centralisers, contractors can have peace of mind knowing that they have a reliable, adaptable, and effective tool at their disposal to ensure the success of their trenchless installations.

WSAA Approved

PA: 2314

Standard:

WSA P5 324 Casing Spacers



OVER 100,000 UNITS PRODUCED AND USED IN THE FIELD.

empireinfrastructure.com.au

aaron.mackley@empire.team

1300 116 664

